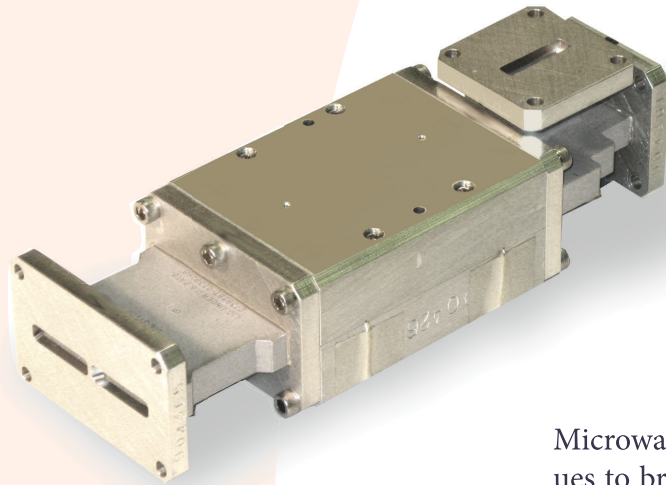


## Toroid RF DPDT X-Band Waveguide Switch

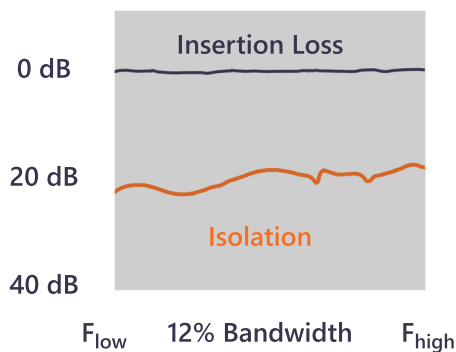
Fast Switching  
12% Bandwidth  
Low Insertion Loss



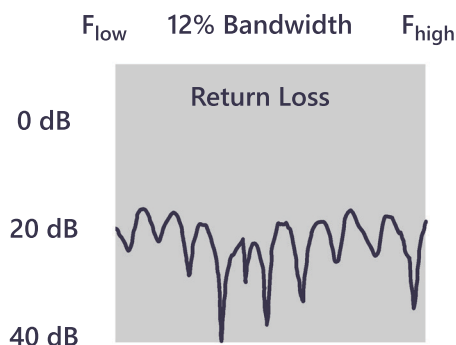
Microwave Applications Group (MAG) continues to broaden its product line and is pleased to offer a non-reciprocal toroidal DPDT waveguide switch. This X-Band switch offers excellent performance over 12% bandwidth, and is a lower cost alternative to other switch architectures.

The switch is available with either integral or remote driver circuitry as shown on the reverse side of this sheet.

The example shown here is presented in a compact package optimized to occupy minimal space. Additional port configurations are customizable to meet system requirements.



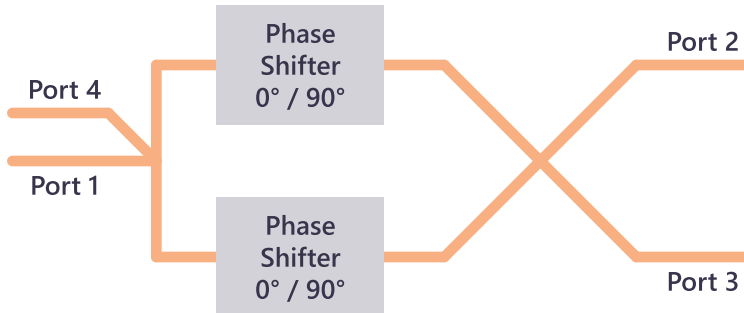
### Measured values taken at lab ambient



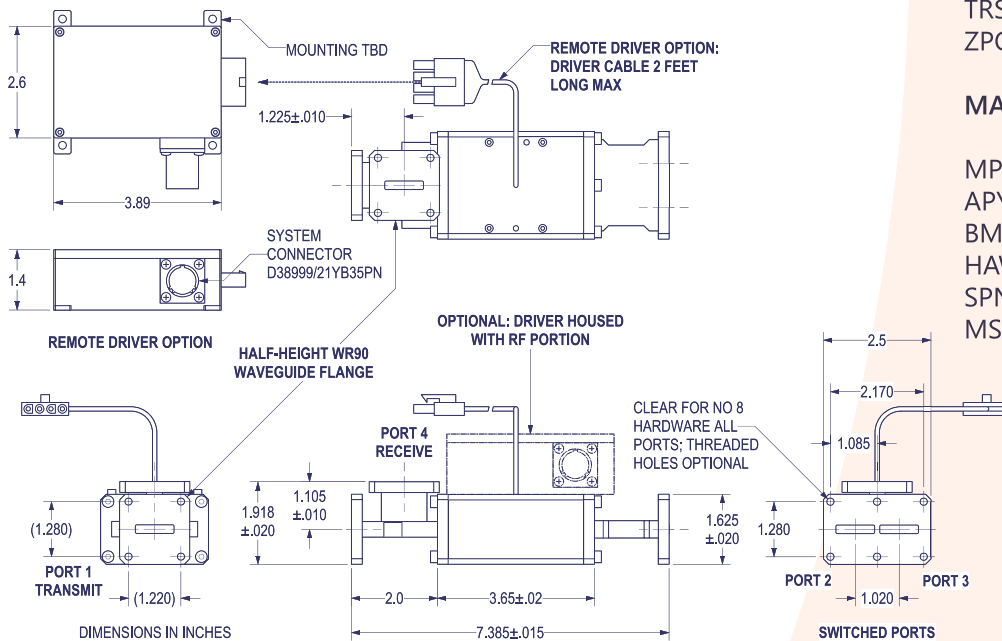
PARAMETER	VALUE
Peak Power	4 kW min
Insertion Loss	less than 1 dB
Return Loss	better than 15 dB
Isolation	17 dB or better
Operating Frequency Bandwidth	12 percent

# Toroid RF DPDT X-Band Waveguide Switch

## Block Diagram



## Outline Drawing



## Sample of programs supported by MAG as OEM:

APQ-164 B-1B ORS  
 APQ-181 B-2  
 APS-143 CP-140 Imaging  
 APY-1/2 E-3 AWACS  
 AR320 3D Air Defense  
 ARTS-V1 / CLPS  
 ARTS-V2  
 ASARS-2 Synthetic Aperture  
 ARSR-4 FAA Long Range  
 ASTOR  
 DWSR-2501C Doppler Weather  
 Global Hawk Synthetic Aperture  
 I-15/23 Reflectarray  
 I-30 Simulator  
 MPN-14K Landing Control  
 PAAS Test Range  
 Princeton Plasma Physics Laboratory  
 RAC 3D Air Defense  
 Skyshield 35 Air Defense  
 Smart-L 3D Air Defense  
 SPN-35C Approach Control  
 SPQ-9B Surveillance / Tracking  
 TPAAS Test Range  
 TRS-3D Multimode  
 TRS22XX 3D Air Defense  
 ZPQ-1 Predator TESAR

## MAG DMSMS program support:

MPQ-64 Sentinel SHORAD  
 APY-1/2 E-3 AWACS  
 BMEWS / PAVE PAWS  
 HAWK  
 SPN-35C Approach Control  
 MSQ-T43 MTE System

All photos MAG, except front header USN. The use of images and references to programs does not imply endorsement of or by MAG or the rights holders or program offices.